

# **louis poulsen**



## **Environmental Product Specifications**

— LP Icon

## Product description

- The fixture mainly provides direct downward illumination.
- The shade is lit up from within and creates a softly diffused glow.
- Depending on the lenses chosen, the downwardly directed light can be distributed symmetrically or asymmetrically.
- Optical lenses in front of the LEDs ensure precise light distribution.
- The reflector surrounding the LED boards and lenses creates a transition from high luminance to lower luminance, thereby reducing uncomfortable contrast.



## Product info

### Mounting

Fitting/pipe stub dimensions:  
Dia. 48 mm min. 100 mm or wire suspension.

Installation cord:

Side-mounted and top-mounted versions: 9 m, 5 x 1.5 mm<sup>2</sup> (Class I) or 9 m, 4 x 1.5 mm<sup>2</sup> (Class II).

Top-mounted: For 3/4" pipe thread min. 34 mm.

Wire-mounted version: No cord, but approved for looping max. 3 x 1.5mm<sup>2</sup> via IP68 connectors.

### Finish

Aluminum colored with textured surface, powder coated.

### Light source

LED

### Sizes and weights

Width x Height x Length (mm)

476 x 422 x 476 Max 12.8 kg

### Class

Ingress protection IP66.

Electric shock protection:  
I w. ground, II w/o ground.

IK06.

## Product family



LP Icon LED Upgrade Kit



LP Icon Wall

## Product variants

Mounting	Light source	Lumen	Class	Light technique	Lighting control	Special accessories
Side-mounted	LED 3000K 32W	3214	I	ASY2	2xzhaga sr	3000 lumen
Top-mounted	LED 3000K 61W	3276	II	ASYT3	Dali + clo dac	6000 lumen
Wire top-mounted	LED 4000K 32W	3288		DOUBLE SYMM	Nightdim + clo dpc	
		3303		ROT5		
		3323				
		3387				
		3400				
		3415				
		6275				
		6402				
		6432				
		6470				
6488						
6619						
6650						
6690						

## Material information

### RoHS

This product is compliant with the requirements contained in the European Directives, RoHS Directive 2011/65 and 2015/863.

### REACH candidate List

To the best of our knowledge and based on the information provided by our suppliers, the product does not contain more than 0.1 percent (in weight terms) of any deliberately added SVHCs.

### Packaging

The product is packaged in a plastic bag and cardboard. The packaging material can be easily sorted and treated in waste recycling channels. The packaged product is delivered on a returnable wooden pallet.

### Recycled raw material

The aluminium material is sourced from min. 90% recycled aluminium.

Cardboard is made from min. 75% recycled fibre mass. Additional cardboard material comes from an FSC approved sources.

### Recycling

We encourage everyone to take care of the product - even at the end of the product's lifetime. We also offer spare parts, so that we can extend the product lifetime even further.

The luminaires contain valuable materials. They therefore have to be decommissioned and dismantled for reuse of materials in other products.

This product is designed so that 100% of the product can be disassembled and reused.

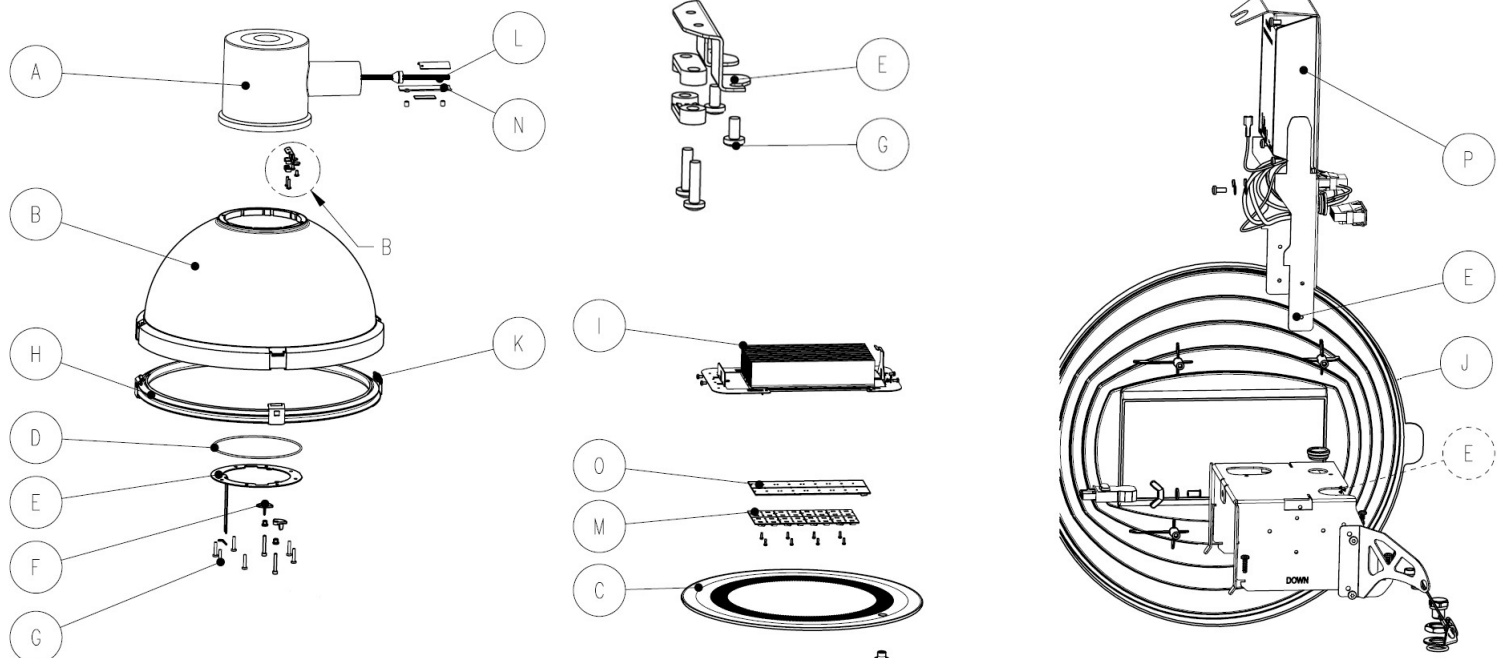
Louis Poulsen is part of ELRETUR which ensures that electronic waste (WEEE) across of Europa is reused.

This product must be treated as electronic waste:



## Material list

Positions number	Part description	Included substances and materials	Country of origin	Weight% (of the entire product)
A	House	Die-casted aluminium parts	DK - Denmark	15,8%
A	Painting	Powder coating	DE - Germany	0,7%
B	Plastic parts	Plastic - PMMA	DK - Denmark	12,7%
C	Glass	Clear hardened glass	DE - Germany	16,2%
D	Gasket	Plastic – Silicone rubber	IT - Italy	0,0%
E	Steel plate	Aluzink	DK - Denmark	12,8%
F	Fastener	Plastic - PC	CN - China	0,0%
G	Steel screws, bolts and nuts	Stainless steel	CN - China	2,2%
H	Gasket	Plastic - EPDM	DK - Denmark	2,0%
I	Heat sink	Aluminium profile	DK - Denmark	7,2%
J	Reflector	Plastic – ASA	DK - Denmark	2,0%
K	Snap hook	Stainless steel	DE - Germany	0,1%
L	Cord and wires	Rubber, silicon and copper	IT - Italy	8,8%
M	Plastic parts	Plastic – PA	DE - Germany	0,5%
N	Threaded plate & tap connector	Stainless steel	TW - Taiwan	0,4%
O	LED board	Variety of components	AT - Austria	0,4%
P	Driver	Variety of components	US - United States	1,6%
Q	Packaging	Corrugated cardboard	DK - Denmark	16,8%
R	Plastic bag	Plastic - LDPE	LT - Lithuania	0,3%
S	Instruction and labels	Paper	DK - Denmark	0,1%
				100%



# Life Cycle Screening

## Background

Our carbon footprint is the total quantity of greenhouse gas (GHG) emissions associated with the full lifecycle of the product. This includes the impacts associated with raw materials and emissions from manufacturing (materials and resources), transport, in use (cleaning) impacts and impacts at end of life (reuse, recycling, incineration, landfill etc.).

## Basis of calculation

This is calculated according to the EU Product Environmental Footprint and presented according to ISO 14067 (Carbon footprint of products).

## EU Product Environmental Footprint (PEF)

The PEF methodology is a new standard, introduced by the European Commission. The mission: to strengthen the (European) market for green alternatives and ensure that environmental impact is transparently assessed.



## Use stage

The product use stage is calculated for a lifetime of 15 years with 1,000 hours of use each year in Europa, as required by the reference in PEF.

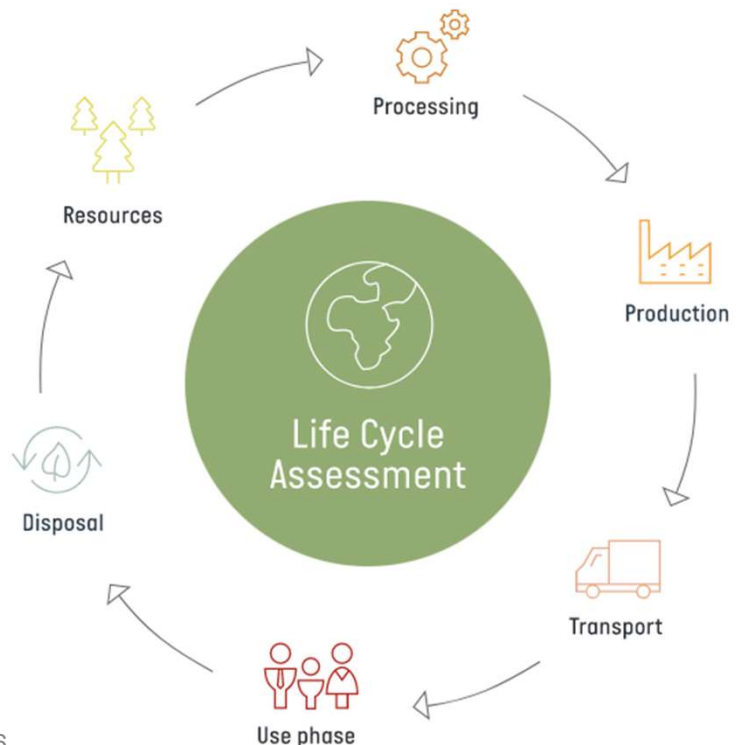
The electricity is based on the European energy mix, with data from: the European Environment Agency Greenhouse gas emission intensity of electricity generation.

## Transport

1,000 km of transport is calculated for the product from factory to end customer as required by the reference in PEF.

## Uncertainties associated with these calculations

Calculation of emission levels is associated with uncertainty. This means that results may vary from actual levels. By using the PEF method, uncertainties are embedded in the Life Cycle Screening result using statistical methods.



## Life Cycle Screening results

**Product that has been calculated as a reference for the product family:**

LP Icon, LED-DAC LI 3K, upright, 32 Watt.

### Production of the product

Total climate emission:

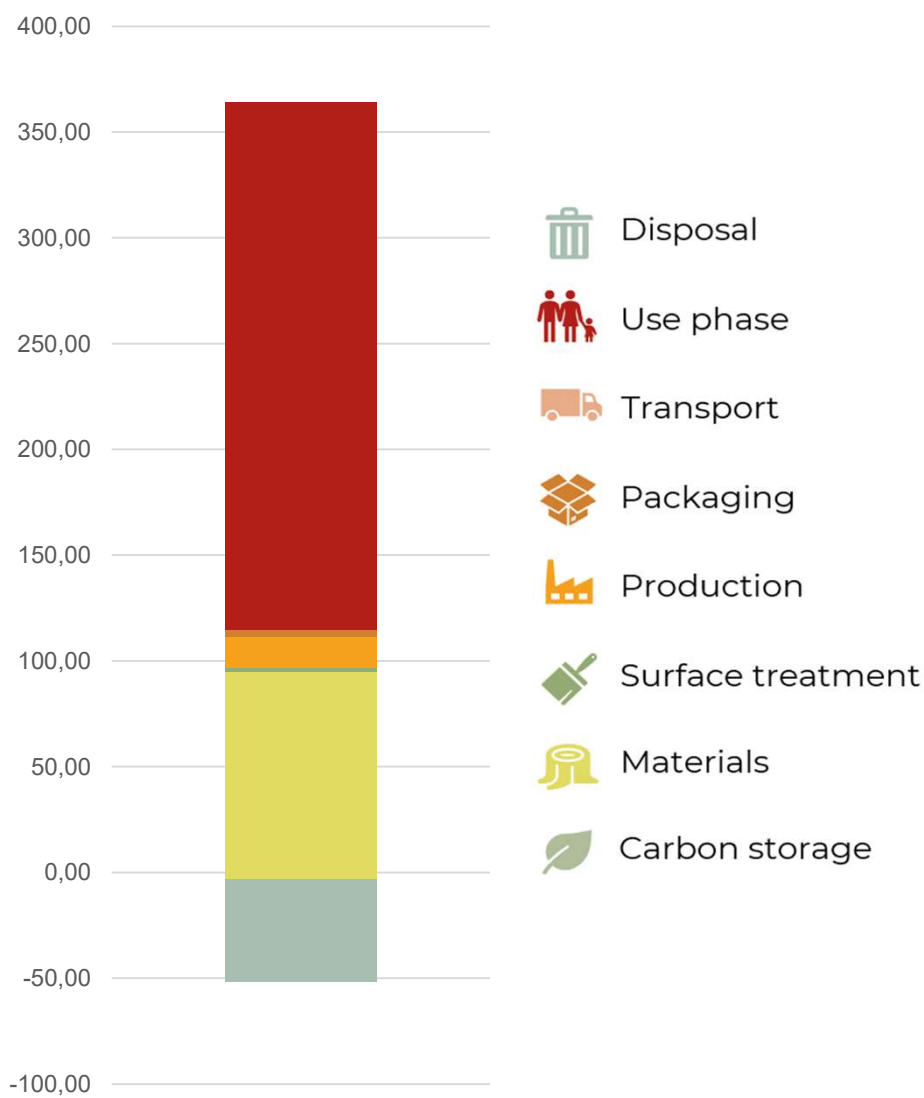
**70 KG CO2-e**

### Production of the product and use stage

Total climate emission:

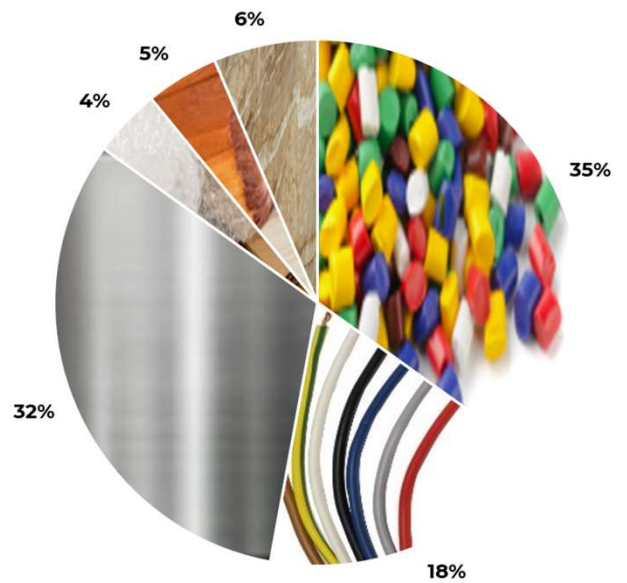
**310 KG CO2-e**

### Carbon stages



**Main emission sources (pr material group)\***

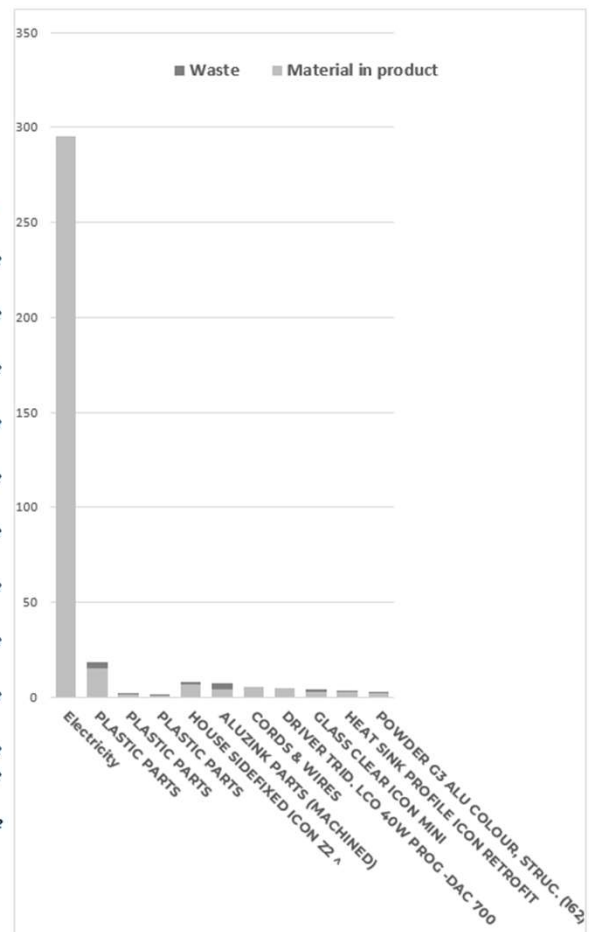
Group	Total impact
Solid Wood	0,00 kg CO2-e
Plastic	24,16 kg CO2-e
Cover	0,00 kg CO2-e
Standard Components	0,00 kg CO2-e
Electronics	12,48 kg CO2-e
Metal	22,22 kg CO2-e
Packaging	2,89 kg CO2-e
Upholstery	0,00 kg CO2-e
Wood Based Board	0,00 kg CO2-e
Surface Finish & Chemicals	3,11 kg CO2-e
Glass / Stone / Ceramics	4,43 kg CO2-e



The values presented here represent total emissions per material group (incl. material, production, transport, waste, CO2e uptake)

**Main emission sources (pr element)\***

Element	Material	Total impact
Electricity	0	295,18 kg CO2-e
PLASTIC PARTS	Acrylic (PMMA), molded	18,39 kg CO2-e
PLASTIC PARTS	EPDM rubber, molded	2,02 kg CO2-e
PLASTIC PARTS	Polyamide (PA6), molded	0,94 kg CO2-e
HOUSE SIDEFIXED ICON Z2 ^	Alu. cast	8,28 kg CO2-e
ALUZINK PARTS (MACHINED)	Alu. Machined	7,24 kg CO2-e
CORDS & WIRES	Electric cable kg	5,29 kg CO2-e
DRIVER TRID. LCO 40W PROG -DAC 700	Power supply with cables + connectors kg	5,18 kg CO2-e
GLASS CLEAR ICON MINI HEAT SINK PROFILE ICON RETROFIT	Flatt glass sheet hardened kg	4,47 kg CO2-e
HEAT SINK PROFILE ICON RETROFIT	Alu. cast	3,76 kg CO2-e
POWDER G3 ALU COLOUR, STRUC. (R62)	Or kg powder consumed	2,89 kg CO2-e
<b>Total impact from Waste</b>		<b>12,68 kg CO2-e</b>



The values presented here represent total emissions per element (incl. material, production, transport, waste, CO2e uptake)