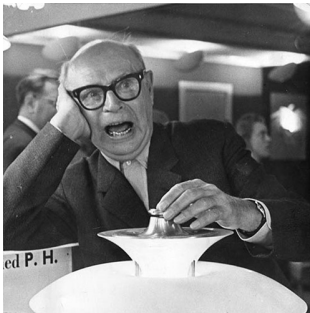


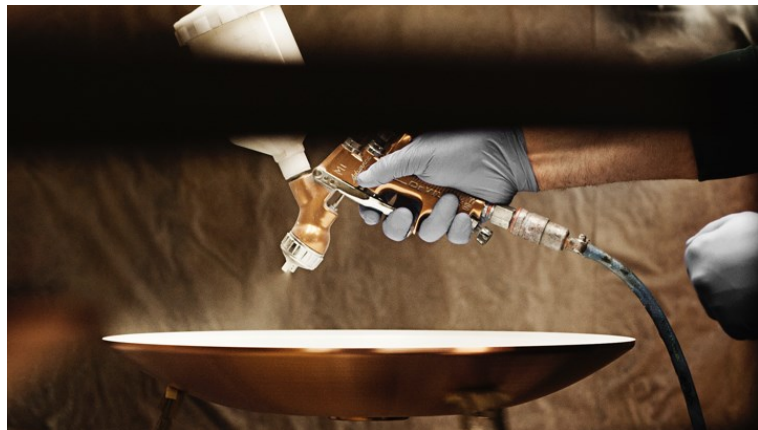
PH ARTICHOKE PALE ROSE

The pendant illuminates any space with a 100% glare-free light due to the 72 leaves, which form 12 precisely positioned rows that hold six leaves each. The fixture ensures the light is distributed inwards as well as outwards, thereby emitting a beautiful and comfortable light.



Poul Henningsen

Poul Henningsen was born in Copenhagen by the famous Danish writer Agnes Henningsen. He never graduated as an architect, but studied at The Technical School at Frederiksberg, Denmark from 1911-14, and then at Technical College in Copenhagen from 1914-17.



Product info

Mounting

Cable 3x0.75 mm² & wire. Cable length: 4 m. Canopy: Yes.

Finish

Pale Rose, powder coated.

Materials

Leaves: Laser cut steel. Top shade: Pale rose, spun steel. Frame: High lustre chrome plated, laser cut steel. Suspension: High lustre chrome plated, spun aluminium.

Sizes and weights

Width x Height x Length (mm) | 600 x 580 x 600 Max 12.3 kg

Class

Ingress protection IP20. Electric shock protection I w. ground.

Light source

1x100W E27



Related products



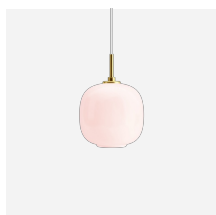
PH 2/1 Pale Rose Brass Table Lamp



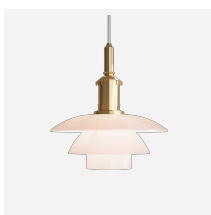
PH 3½-3 Pale Rose Brass Pendant



PH 2/2 Question Mark Pale Rose Table Lamp



VL45 Radiohus Pale Rose Pendant



PH 3/3 Pale Rose Pendant



PH 3/2 Pale Rose Table Lamp

Product variants

Dimension	Light source
Ø 600	1x100W E27

Design

Poul Henningsen

Weight

12.276

Dimensions

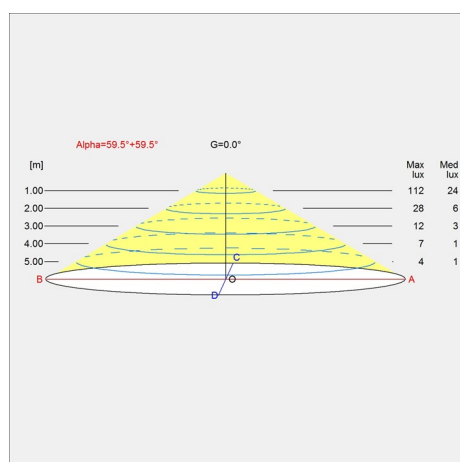
Ø 600

Finish

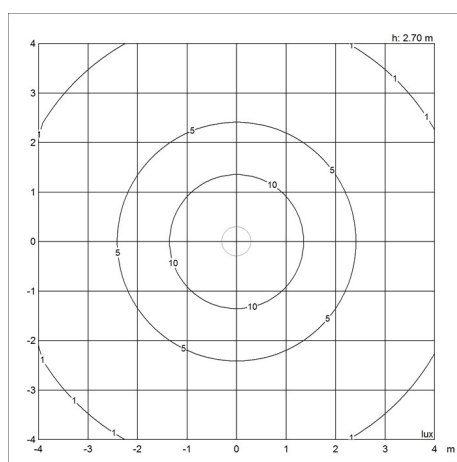
Pale rose

Light distribution diagrams

Cartesian



Isolux



Polar

