

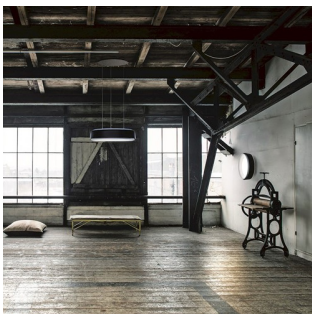
# LP GRAND WALL

The circular luminaire emits a combination of softly diffused, glare-free, downwardly directed light and reflected indirect light from its curved upper rings. A large angled reflector encircles the diffuser and reduces the contrast around the edge. The top reflector is perfectly curved to distribute uplight at a broad angle. A colored outer shade surrounds the reflector and creates an interreflection of light, resulting in a graceful glow on the outside of the top and bottom reflectors. In total, it creates four rings of light surrounding the central diffuser.



## Christian Flindt

Christian Flindt (1972-) graduated with an MAA and MDD from Aarhus School of Architecture in 2002. He then started his own design company in 2003. Here, he placed high emphasis on communication between people, and his focus on this area finds expression in his approach to re-evaluating furniture.



## Product info

### Environmental Product Specification

This product is compliant with the requirements contained in the European Directives, RoHS Directive 2011/65 and 2015/863. This product is designed so that 100% of the product can be disassembled and reused.

### Mounting

Ø320: Cable entries: Rear or side-entry. Driver integrated into ceiling/wall box. Looping: Max. 5 x 2.5 mm<sup>2</sup>. Ø580: Wall bracket: Yes. Looping: No.

### Finish

Reflector: Matte-white satin finish. Outer shade (outside): Matte (black and champagne) or gloss (white). Wet-painted surface. Diffuser: Glossy.

### Materials

Ø320: Top reflector: ABS. Bottom reflector: ABS. Outer shade: ABS. Diffuser: PMMA. Housing: Die-cast Aluminum. Ø580: Top reflector: ABS. Bottom reflector: PE. Housing: ABS. Outer shade: ABS. Diffuser: PMMA.

### Sizes and weights

Width x Height x Length (mm) | 580 x 160 x 580 Max 5.9 kg | 320 x 90 x 320 Max 2.5 kg

### Class

Ingress protection IP20. Electric shock protection I.

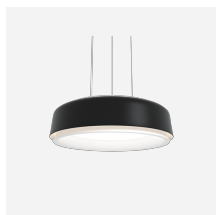
### Light source

LED 2700K 12W

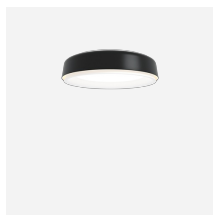
Lumen: 1052



## Related products



LP Grand Suspended



LP Grand Surface Mounted

## Product variants

Dimension	Colour	Mounting	Light source	Lumen	Lighting control
Ø 320	● Black	Wall	LED 2700K 12W	1052	Dali
Ø 580	● Champagne	Wall & surface mounted	LED 3000K 12W	1151	Phase dimming (mains dimm)
	● White		LED 3000K 59W	1166	
			LED 4000K 12W	5159	

# Product description

The circular fixture is a wide family of variants  
 Three different mounting options: wall, ceiling and suspended  
 Three dimensions  
 Three standard colour options on outer ring  
 Geometry consist of top and bottom reflector with an outer ring  
 Gap between outer shade and reflectors  
 Parallel wire suspension  
 Cable and wire length: 4m (13 ft.)  
 Easy to maintain  
 Drivers integral in luminaire  
 Very energy efficient luminaire

## Mounting

Suspended - Simple installation with aircraft cable and adjustable wire grippers  
 Surface / Wall - Easy installation on mounting bracket  
 To be mounted over a 4" octagonal outlet box. Load-bearing anchors & screws provided by others. (USA only)

## Light description

Direct and indirect light  
 Dimmable  
 Downward directed light emitted using a high-efficiency acrylic diffuser  
 The diffuser has an even luminance where each individual LED cannot be seen  
 Cosine diffuse light distribution from diffuser  
 Indirect light using high power LED strips  
 Indirect light diffused before reflected upwards by top reflector  
 Reflected light between reflector and shades differentiating the coinciding rings  
 Top and bottom reflector mat white for a diffuse soft light distribution  
 Bottom reflector curving away to allow light to fade away on edge  
 Using high efficient mid power LEDs the temperature of each LEDs is managed efficiently is kept low  
 LED board replaceable

## Design

Christian Flindt

## Material

Top reflector: ABS (Ø580/22,8"), PE (Ø880/34,6", Ø1480/58,3"), all mat satin finish, white  
 Bottom reflector: PE, mat satin finish, white  
 Outer shade: ABS (Ø580/22,8"), ABS (Ø880/34,6"), PUR (Ø1480/58,3"), all wet paint colour on the outside  
 Diffuser: PMMA  
 LED variants available in 3000K with minimum CRI of 80  
 3500K variants available (USA only)  
 Electronic constant current, class II drivers for 120-277V operation and synchronous 0-10V dimming control. (USA only)  
 Mounting plate of 1.5mm (0.6") with diameter of 280mm/11" (Ø580/22,8"), 490mm/19.2" (Ø880/34,6"), 775mm/30.5" (Ø1480/58,3"), all with white powder coat finish  
 Suspended – canopy plate of 1.5mm (0.6") with diameter 340mm/13.4" (Ø580/22,8"), 580mm/22.9" (Ø880/34,6"), None (Ø1480/58,3"), both with white powder coat finish, with three high quality stainless steel aircraft cables  
 Surface – three custom locking pins of 11mm (0.45") diameter stainless steel  
 Cable: white PVC coated. (USA only)

## Weight

Min: 2.54 kg Max: 5.947 kg

## Dimensions

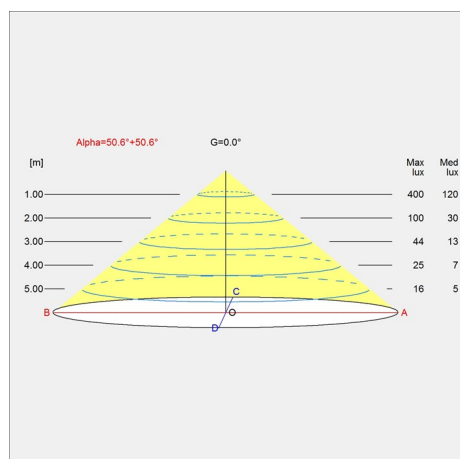
Ø 320, Ø 580

## Finish

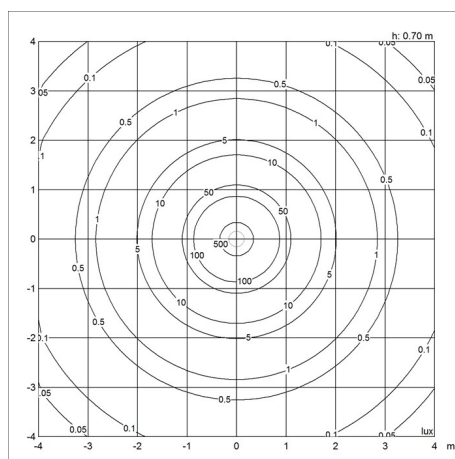
Black, Champagne, White

## Light distribution diagrams

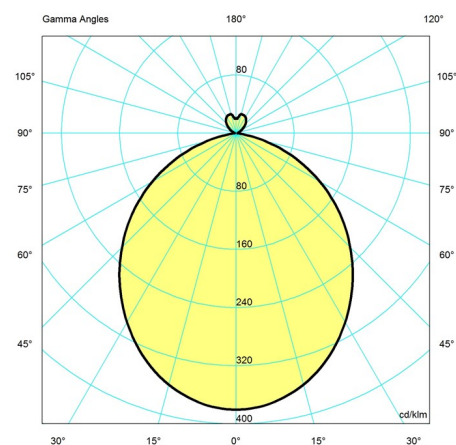
Cartesian



Isolux



Polar



## Spare parts & accessories

Product

LP Grand Ø320, front part with diffuser

Variant number

5741108729